


Angel Home

	GRADUATE	Angel is a high-performance distributed machine learning and graph computing platform based on the philosophy of Parameter Server. It is tuned for performance with big data from Tencent and has a wide range of applicability and stability, demonstrating increasing advantage in handling higher dimension model. GitHub: https://github.com/Angel-ML/angel
---	----------	---

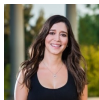
Reference Information

- [Website](#)
- [Github](#)
- Primary Mail Lists
 - <https://lists.lfaidata.foundation/g/angel-announce>
 - <https://lists.lfaidata.foundation/g/angel-technical-discuss>
 - <https://lists.lfaidata.foundation/g/angel-tsc>

Other

- Angel Repository: <https://github.com/Angel-ML>
- Get Involved: <https://github.com/Angel-ML/angel/blob/master/README.md>

Recent space activity



Jacqueline Cardoso

[Angel Home](#) updated Jan 20, 2021 • [view change](#)



Huaming Rao

[Technical Project Getting Started Checklist](#) updated Jan 18, 2021 • [view change](#)

[Technical Steering Committee\(TSC\)](#) updated Jan 15, 2021 • [view change](#)

[Community Meetings](#) updated Jan 15, 2021 • [view change](#)

[Calendar](#) updated Jan 15, 2021 • [view change](#)

Space contributors

- [Jacqueline Cardoso](#) (688 days ago)
- [Huaming Rao](#) (691 days ago)
- [Christina Harter](#) (730 days ago)
- [Fitz Wang](#) (1086 days ago)
- [Fitz Wang](#) (1372 days ago)