


# Ludwig Home

	<b>INCUBATION</b>	<p>Ludwig is a toolbox built on top of TensorFlow that allows to train and test deep learning models without the need to write code. All you need to provide is your data, a list of fields to use as inputs, and a list of fields to use as outputs, Ludwig will do the rest. Simple commands can be used to train models both locally and in a distributed way, and to use them to predict on new data.</p> <p>GitHub: <a href="https://github.com/ludwig-ai/ludwig/">https://github.com/ludwig-ai/ludwig/</a></p>
---	-------------------	--

## Reference Information

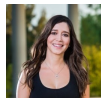
- [Website](#)
- [Github](#)
- Primary Mail Lists
  - <https://lists.lfai.foundation/g/ludwig-announce>
  - <https://lists.lfai.foundation/g/ludwig-technical-discuss>
  - <https://lists.lfai.foundation/g/ludwig-tsc>

## Recent space activity



[fehlner@arcor.de](#)

Ludwig Home updated Aug 17, 2022 • [view change](#)



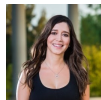
[Jacqueline Cardoso](#)

Ludwig Home updated Jan 20, 2021 • [view change](#)



[Christina Harter](#)

Ludwig Home updated Dec 08, 2020 • [view change](#)



[Jacqueline Cardoso](#)

Ludwig - Community Meetings & Calendar updated May 20, 2020 • [view change](#)

## Space contributors

- [fehlner@arcor.de](#) (39 days ago)
- [Jacqueline Cardoso](#) (613 days ago)
- [Christina Harter](#) (656 days ago)