


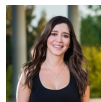
ForestFlow Home

| | | |
|---|-------------------|--|
|  | <p>INCUBATION</p> | <p>ForestFlow is a scalable policy-based cloud-native machine learning model server. ForestFlow strives to strike a balance between the flexibility it offers data scientists and the adoption of standards while reducing friction between Data Science, Engineering and Operations teams.</p> <p>GitHub: https://github.com/ForestFlow/ForestFlow</p> |
|---|-------------------|--|

Reference Information

- [Website](#)
- [Github](#)
- Primary Mail Lists
 - <https://lists.lfaidata.foundation/g/forestflow-announce>
 - <https://lists.lfaidata.foundation/g/forestflow-technical-discuss>
 - <https://lists.lfaidata.foundation/g/forestflow-tsc>

Recent space activity



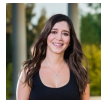
Jacqueline Z Cardoso

[ForestFlow Home](#) updated Jan 20, 2021 • [view change](#)



Christina Harter

[ForestFlow Home](#) updated Dec 08, 2020 • [view change](#)



Jacqueline Z Cardoso

[ForestFlow- Community Meetings & Calendar](#) updated Apr 08, 2020 • [view change](#)

Space contributors

- [Jacqueline Z Cardoso](#) (367 days ago)
- [Christina Harter](#) (410 days ago)