



ML Ops

AI models – beyond the limits of experiments

Francois Tillerot, Orange Cloud for Business,

June 2021



**Business
Services**

The logo for DLFAI & DATA, featuring a stylized blue square icon to the left of the text "DLFAI & DATA" in blue uppercase letters.

**DLFAI
& DATA**

Agenda

Once upon a time... AI Experiments

- Moving from Data to AI driven
- Roles and architecture for AI development

Observations

- Datalake / Data store / Pre-processing / Features
- Performance
- User experience / Maturity

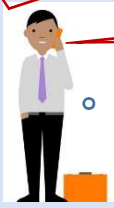
Solutions

- MLOps – roles and architecture

I need to collect, manage, secure **my data**

Let's build a **datalake...**

CIO
CTO



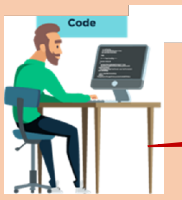
Yes, but... how do I **leverage** my data now?



Business Teams
(Ops, Mkg, Dev...)

We need to address **use cases**
(automate, predict, decide...)

Let's build **AI models...**



Data driven scenario

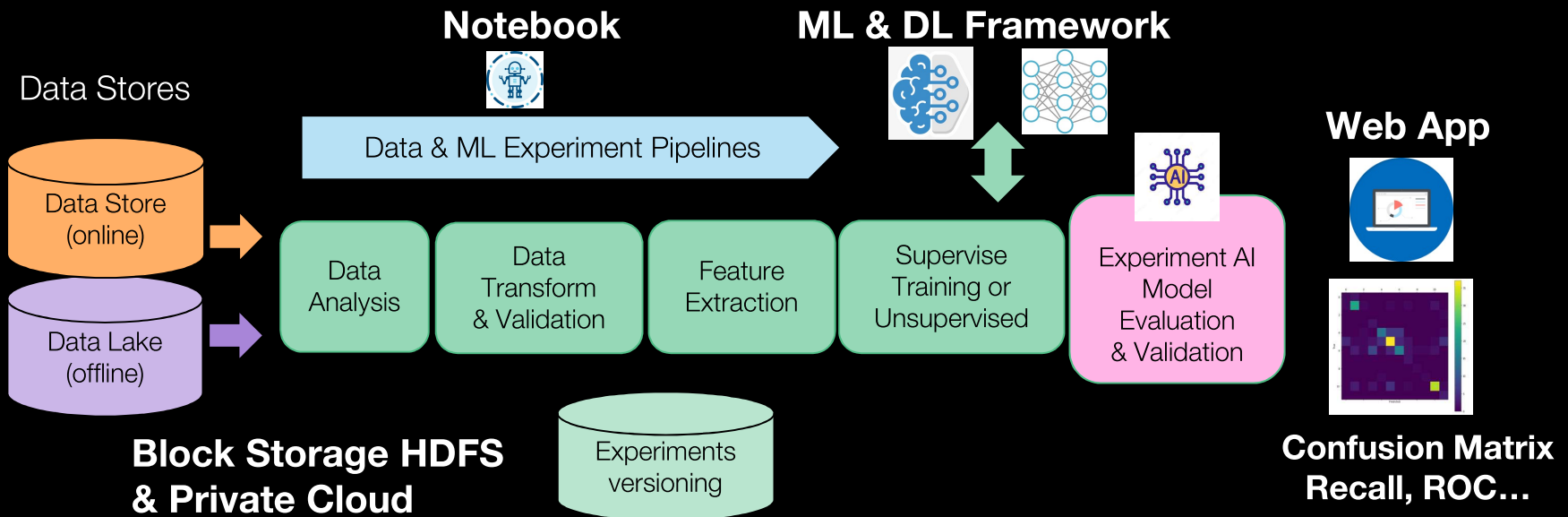
AI driven scenario

Yes, but... how do I **access data and scale** my models now?



Data & AI Experiments Architecture

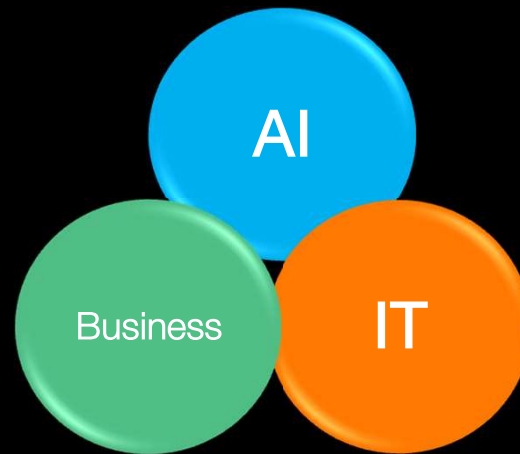
AI Roles: Data Eng, Data Analyst & Data Scientist



Then... what about model testing, monitoring, scaling?

Data & AI Experiments - Experience & Observations

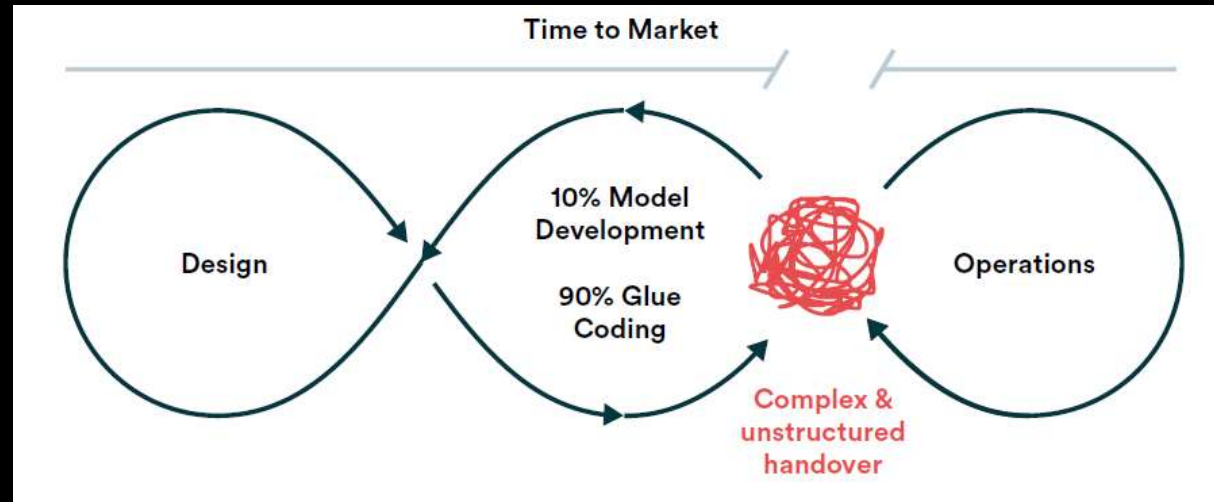
- ✓ AI Model developers and Business Users don't speak the same language
- ✓ Data transform & validation often points out business challenges
- ✓ « Performance » is not understood the same



- Deliver AI Model asap
Upgrade easily
- Understand user expectation & User Experience
- Address ML Lifecycle
- Assess your Maturity



How to deploy ML models in Operations ?



**Today only 20 % Companies
can Deploy and to Operate ML models
in operation & with Acceptable ROI**

Five AI Maturity dimensions



Strategy

The plan of action for achieving the desired level of AI maturity in the organization.



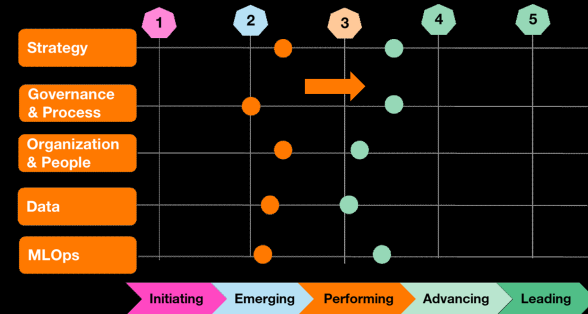
Governance & Process

The policies, processes and relevant technology components required to ensure safe, reliable, accountable and trustworthy AI solutions.



Organization People

The leadership practices as well as roles, skills and performance measures required for people to successfully build and/or work with AI.



Data

The data required to support specific AI techniques defined by the AI strategy.



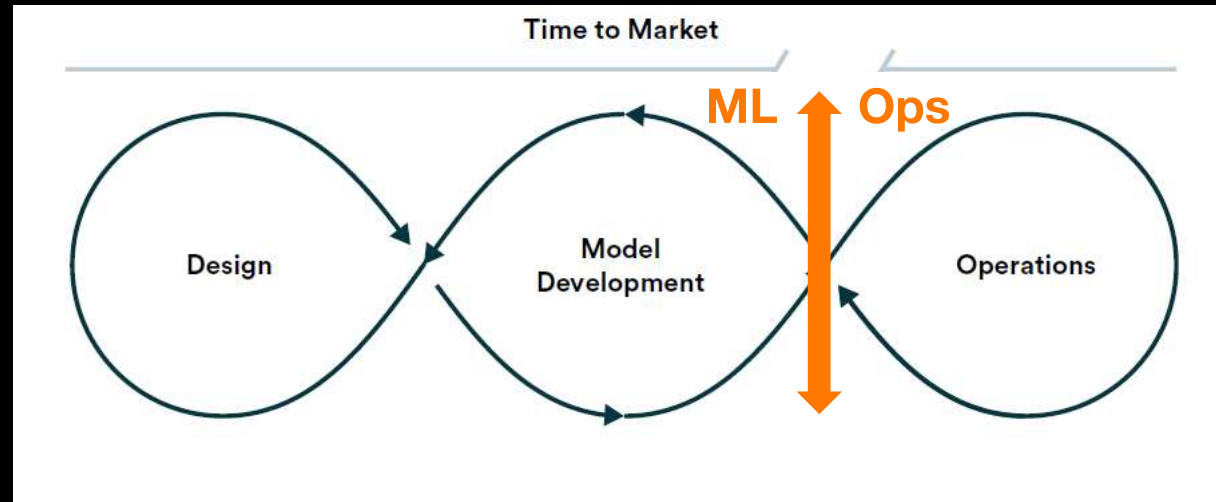
MLOps

The technical infrastructure and tools needed to train, deliver and manage AI models across their lifecycle.

Readiness for MLOps
At Maturity level from 3-4 / 5



MLOps: Scale ML beyond the limits of experimentation

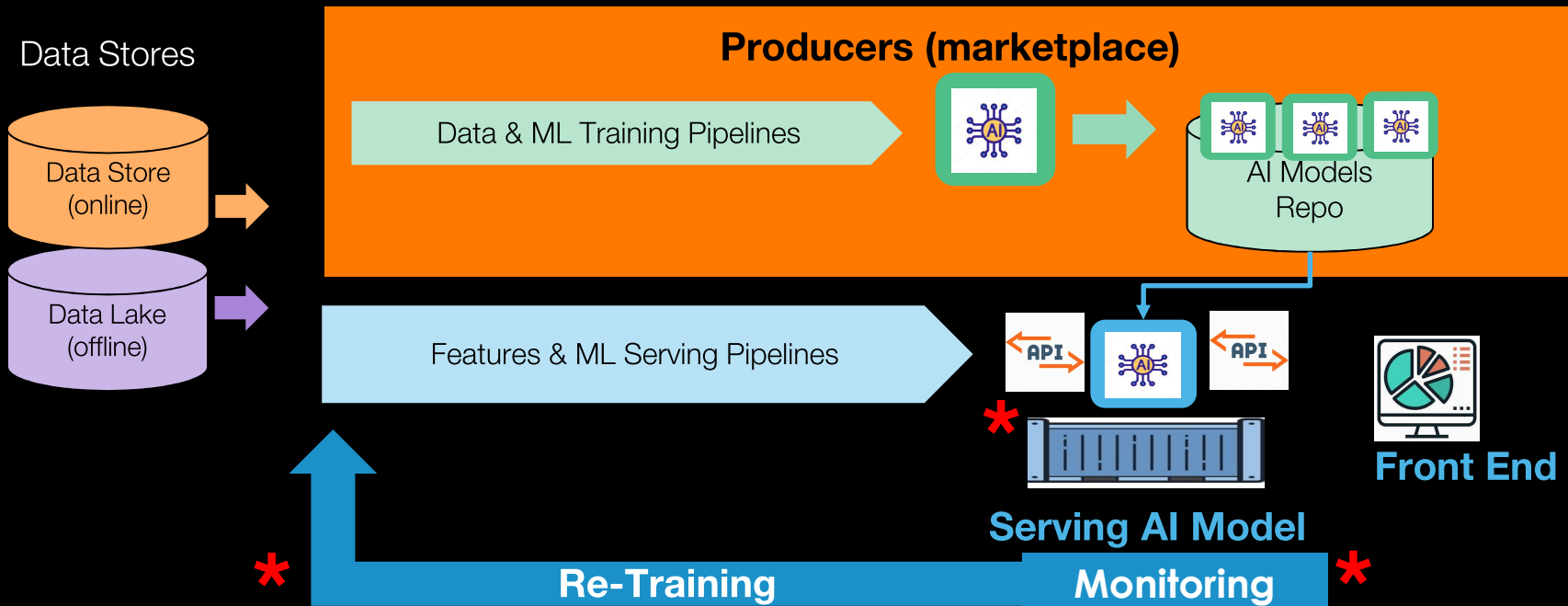


cover the entire ML lifecycle and all of the user roles necessary to create ML production systems



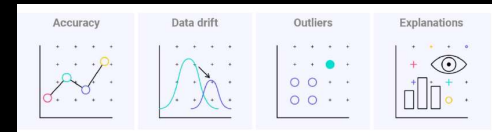
ML OPs Architecture

AI Roles: Data Eng, Data Analyst & Data Scientist & ML Eng *



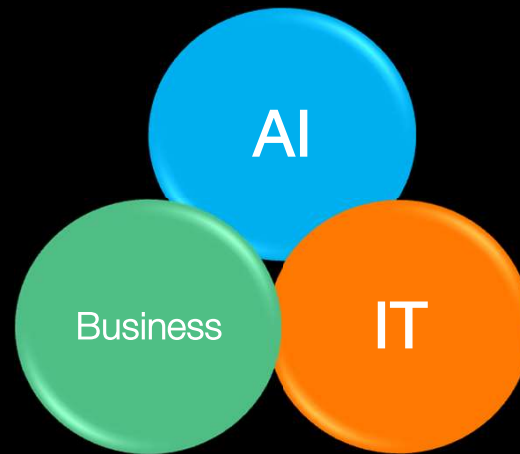
Any (public) Cloud

Orange Internal



Key takeaways

- ✓ Developing AI pipelines as a first step to move towards an AI-driven Company
- ✓ Maturity of your Company shall be assessed to define and track a Transformation Plan, including roles and Governance



- ML Engineer as a key player to liaise between AI developers and Business Owners

- MLOps platforms will bring the capability to manage the entire lifecycle of AI

- Testing, monitoring, scaling models are key from the very beginning

Merci

